

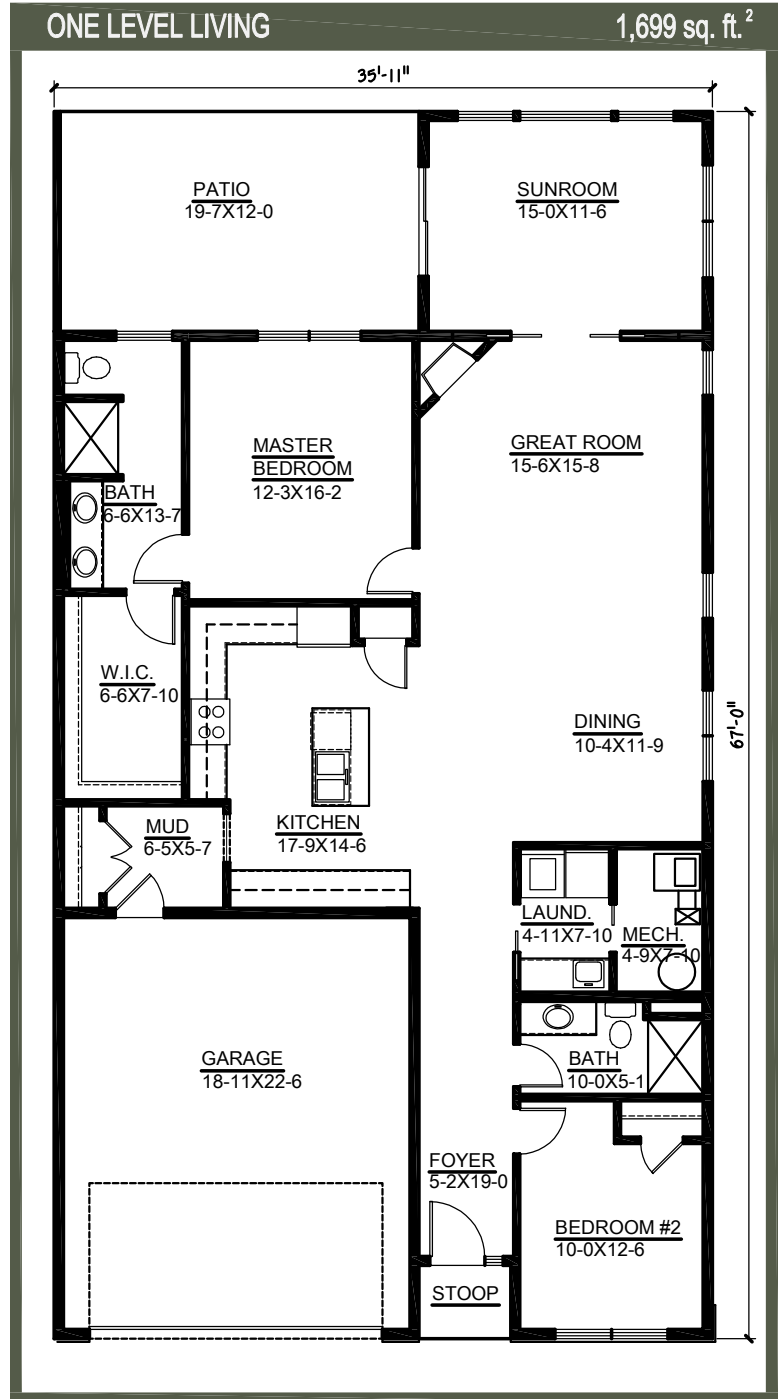
The GARCEAU NO LOFT

DFP #216394

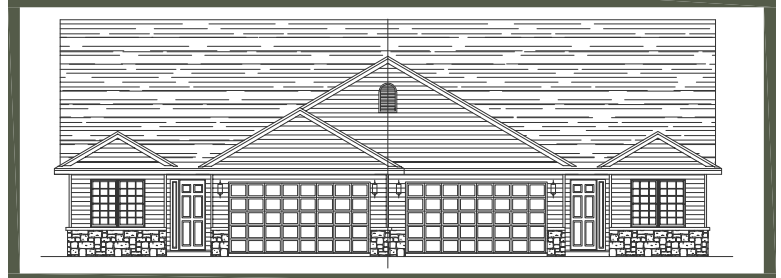


Features

- * 1,699 Total Square Feet¹
- * 9 Foot Ceilings Throughout, Vaulted Sunroom
- * Main Level Den & Bedroom
- * Private Master Suite and Bath
- * Elegant Living and Corner Fireplace
- * 3/4 Guest Bath on Main Level
- * Main Level Laundry/ Mud Room
- * Open Eat-in Kitchen



EXAMPLE FRONTS



651.482.7684 www.kettlerconstruction.com

MN BUILDER LIC. 20628504 © 2011 Copyright Kettler Construction, Inc. All Rights Reserved

1. Total sq. ft. includes 4 Season Porch and Loft when applicable. 2. Main Level sq. ft. includes 4 Season Porch

The GARCEAU NO LOFT

DFP #216394



651.482.7684

www.kettlerconstruction.com

MN BUILDER LIC. 20626504 © 2011 Copyright Kettler Construction, Inc. All Rights Reserved

