

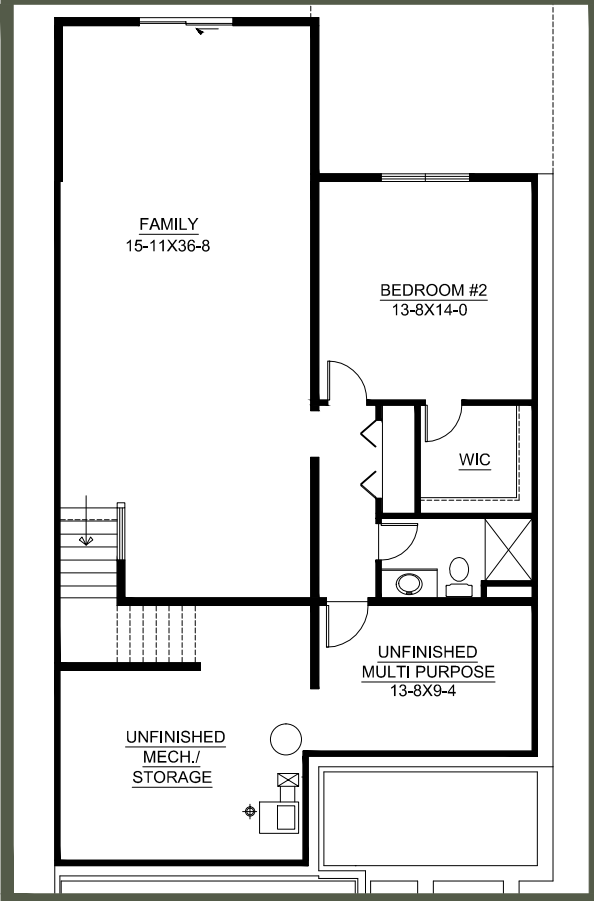
The DOGWOOD

Features

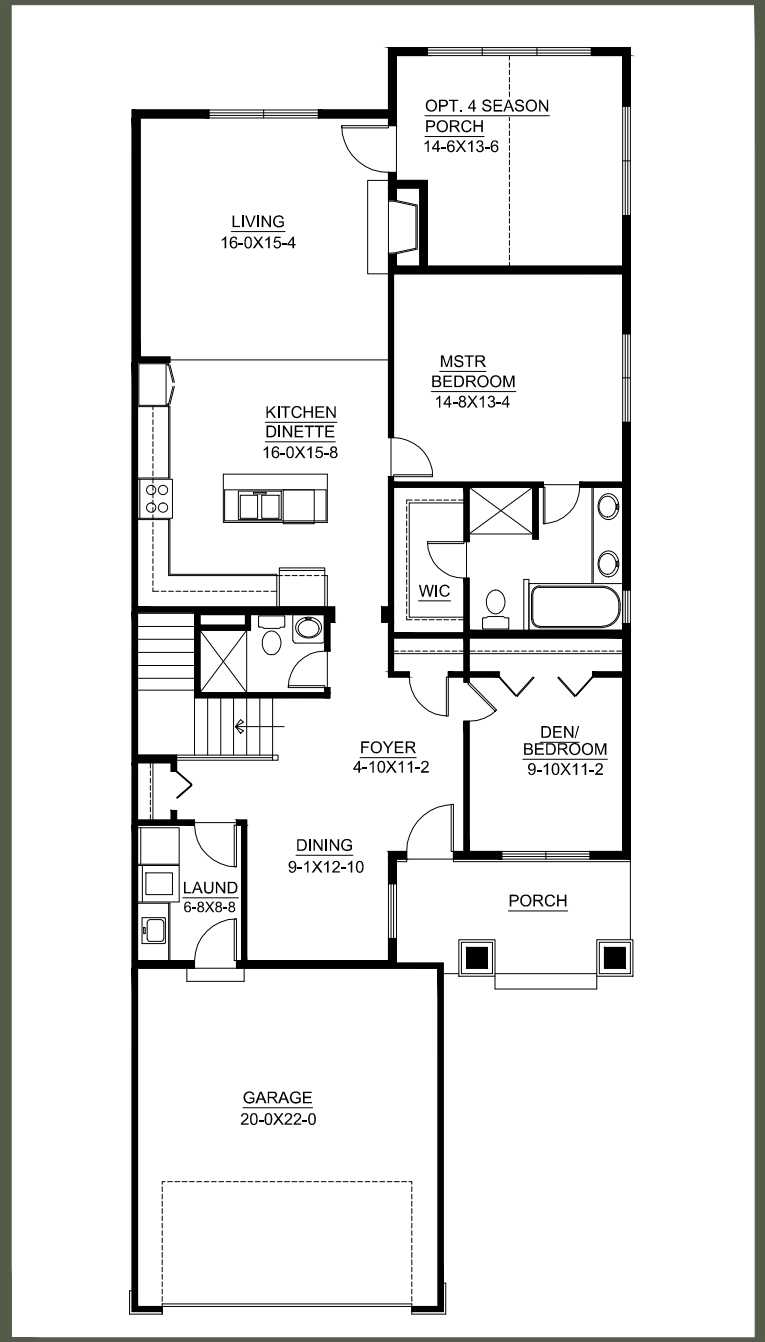
- * 2,732 finished square feet¹
- * 9 foot ceilings throughout, vaulted porch option
- * Main floor Den/ Bedroom
- * Private Master Suite and Bath
- * Spacious Living Room and Formal Dining
- * 3/4 Guest Bath on Main Level
- * First Floor Laundry/ Mud Room
- * Open Kitchen with Center Island

Each plan features flexible lower level spaces that can be developed into workshops, storage, additional bedrooms, baths, office space, theatre room, craft room, or other living spaces. All lower levels are lookouts or walkouts.

LOWER LEVEL 1,015 finished sq. ft.



UPPER LEVEL 1,717 finished sq. ft.²



651.482.7684 www.kettlerconstruction.com